

Beacon Series „G“

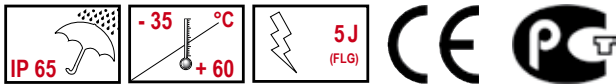
LED steady beacon DLG
 LED flashing beacon BLG
 Xenon strobe beacon FLG
 Steady beacon WLG
 Flashing beacon BKG



Model overview	Ø 120 mm	Light source
LED steady beacon	DLG	48 LEDs
LED flashing beacon	BLG	48 LEDs
Xenon strobe beacon	FLG	5 J xenon tube
Steady beacon	WLG	25 W bulb BA15d
Flashing beacon	BKG	25 W bulb BA15d

Features

- Comprehensive range of beacons in size Ø 120 mm and with high protection class
- Excellent cost/performance ratio
- LED steady or flashing beacons with high excellent brightness (48 LEDs), shock and vibration-proof, maintenance free, low nominal current, inrush current limitation, wide voltage range
- Bayonet locking – easy opening with push button, no tools required (WLG/BKG)



48 LEDs – light emission in all directions



25 W bulb socket BA15d



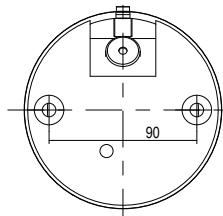
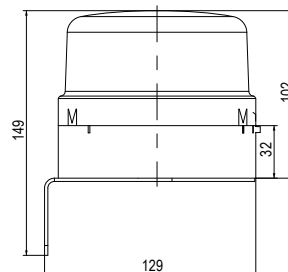
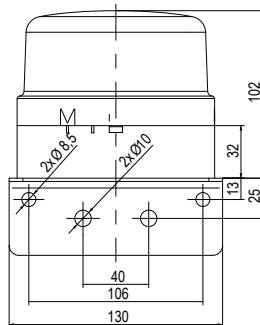
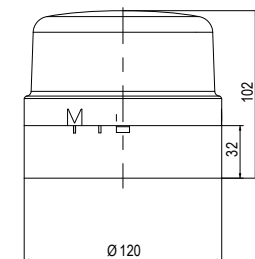
bayonet locking system, IP 65

Mounting options

- Horizontal mounting (standard)
- Vertical mounting
Accessory metal bracket, screws/nuts included



WIG - metal bracket



Colour code for lens

1	amber	5	blue
2	red	6	green
4	clear	7	yellow



Technical data

Type	DLG	BLG	FLG	WLG	BKG
Housing, colour	ABS, grey RAL 7035 or black RAL 9005				
Lens, colour	polycarbonate, amber, red, clear, blue, green, yellow				
Cable entry	5-10 mm, grommet at bottom				
Mounting	horizontal or vertical with bracket				
Duty cycle factor	100 %				
Terminals	up to 2,5 mm ²				
Temperature range (operation)	-35 °C to +60 °C		-30 °C to +50 °C		-30 °C to +60 °C
Light source	LED		xenon tube		bulb BA15d
Life time (light source)	~ 100.000 h		~ 3 mio. flashes		
Wattage			5 J		max. 25 W
Flashing-/strobe frequency	---	~ 2 Hz	~ 1 Hz	---	~ 2 Hz
Weight (g)	270		320		230



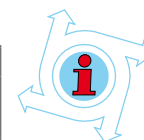
Order data

Type	Denomination	Nominal voltage (V)	Order No.		Nominal current (A)	Voltage range (V)
			Housing grey	Housing black		
LED Beacons						
DLG	LED steady beacon	12 V AC/DC	827 10C 404	827 50C 404	0,325	11-16 V AC/DC
		24 V AC/DC	827 10C 405	827 50C 405	0,200	17-32 V DC
					0,20	17-26 V AC
		48 V AC/DC	827 10C 408	827 50C 408	0,085	35-62 V DC
					0,170	35-52 V AC
BLG	LED flashing beacon	12 V AC/DC	807 10C 404	807 50C 404	0,325	11-16 V AC/DC
		24 V AC/DC	807 10C 405	807 50C 405	0,200	17-32 V DC
					0,220	17-26 V AC
		48 V AC/DC	807 10C 408	807 50C 408	0,085	35-62 V DC
					0,170	35-52 V AC
FLG	Xenon strobe beacon	12 V AC/DC	842 14C 404	842 54C 404	0,700	+/- 10 %
		24 V AC/DC	842 14C 405	842 54C 405	0,320	
		110/120 V AC	842 13C 310	842 53C 310	0,200	
		230/240 V AC	842 13C 313	842 53C 313	0,100	
					0,280	
FLG-A	30/60 flashes/min.	24 V AC/DC	842 16C 405	842 56C 405	0,280	
FLG-B	30/90 flashes/min.		842 17C 405	842 57C 405	0,400	
Steady beacon						
WLG	Steady beacon	up to 250 V AC/DC	822 10C 900	822 50C 900	+/- 10 %	
Flashing beacon						
BKG	Flashing beacon	12-48 V AC/DC	832 10C 408	832 50C 408	0,700	+/- 10 %
		110/120 V AC	832 10C 310	832 50C 310	0,200	
		230/240 V AC	832 10C 313	832 50C 313	0,100	



Accessories

Type	Denomination	Order No.	Nominal voltage
WIG	Bracket for wall mounting	822 200 900	---
GL21	Bulb 25 W, BA15d	890 025 904	12 V
GL22	Bulb 25 W, BA15d	890 025 905	24 V
GL25	Bulb 25 W, BA15d	890 025 910	110/120 V
GL26	Bulb 25 W, BA15d	890 025 913	230/240 V



NOTE: Light sources have to be ordered separately.