

Strobe Beacon BZG

BZG



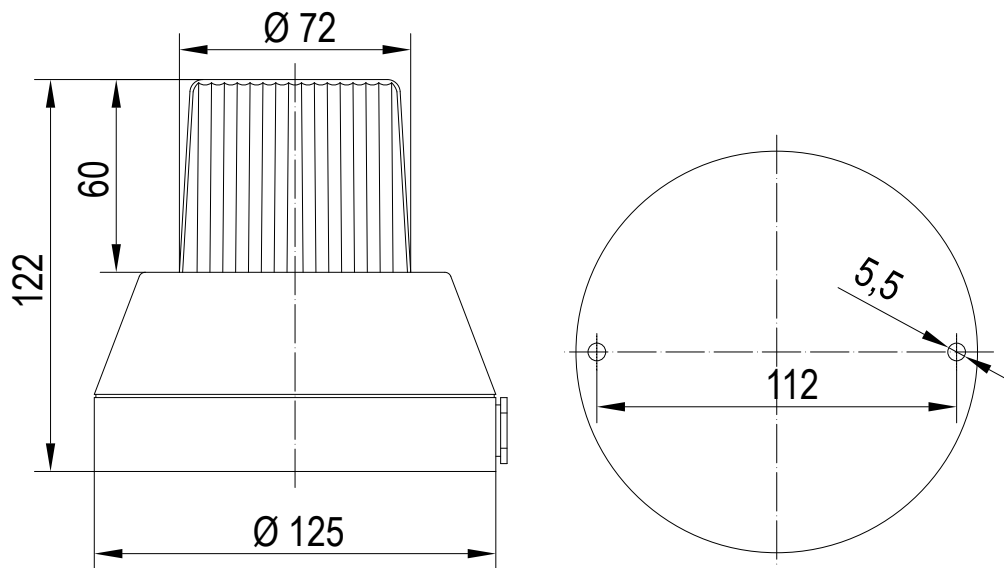
Features

- Robust strobe beacon with aluminium die cast housing epoxy-powder coated RAL 7000
- High strobe energy up to 15 J
- Available in amber, red and yellow
- Waterproof, corrosion proof



Technical data

Type	BZG
Housing, colour	Alu-die cast, epoxy-powder coated, grey RAL 7000
Lens, colour	polycarbonate, amber, red, yellow
Cable diameter	5-12 mm
Cable entry	on-wall or in-wall
Duty cycle factor	100 %
Terminals	up to 2,5 mm ²
Temperature range	-30 °C to +50 °C
Light source	xenon tube
Strobe energy	15 J
Strobe frequency	1 Hz
Life time (light source)	~ 5 mio. flashes



Order data

Type	Strobe energy (J)	Nominal voltage (V)	Order No.	Nominal current (A)	Weight (g)
BZG	15	230/240 V AC	741 03C 313	0,230	610
		24 V DC	741 04C 005	0,700	635

NOTE: only available in amber, red and yellow

Colour code for lens		C
1	amber	C
2	red	
7	yellow	